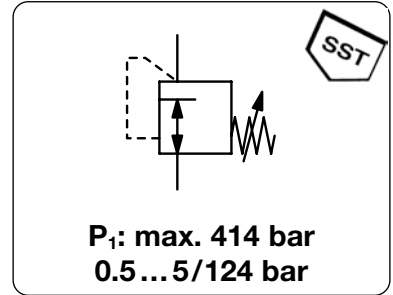


MINIATURE HIGH PRESSURE REGULATOR UP TO 414 BAR

RH1

Description Diaphragm-operated high pressure regulator of small and light design.
Media compressed air, non-corrosive gases or liquids
Supply pressure max. 414 bar
Adjustment by black plastic knob
Relieving function non-relieving
Leakage rate $< 1 \times 10^{-4}$ mbar l/s He
Gauge port 1/4" NPT for inlet and outlet pressure
Weight aluminium 200 g, brass 430 g
Mounting position any
Temperature range -25 °C to 75 °C / -13 °F to 167 °F
Materials Body: nickel-plated aluminium
 Regulating system: piston with EPDM o-ring, as option NBR/Buna-N or FKM
 Valve seat: CTFE or Vespel as option
 Inner valve: stainless steel and aluminium

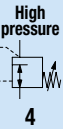


Dimensions			K _v -value (m³/h)	Flow rate m³/h	l/min	Connection thread NPT	Pressure range bar	Order number
A	B	C						
mm	mm	mm						

High pressure regulator 414 bar			for gases and liquids, non-relieving aluminium, piston with EPDM				RH1	
41	76	13	0.05	84*2	1400*1	1/4" NPT	0.5... 5	RH1-02A
							0.5... 10	RH1-02B
							1.5... 15	RH1-02C
41	76	13	0.05	192*3	3200*2	1/4" NPT	4.0... 48	RH1-02D
							8.0... 83	RH1-02E
							10...124	RH1-02F

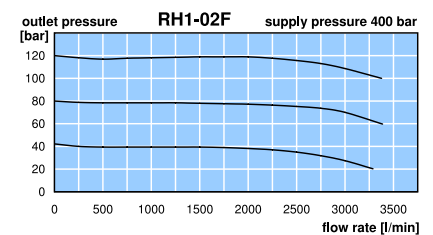
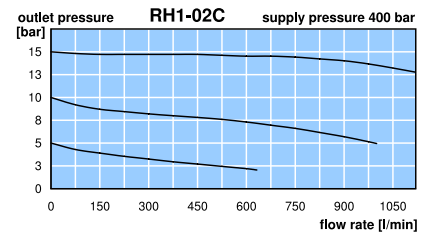
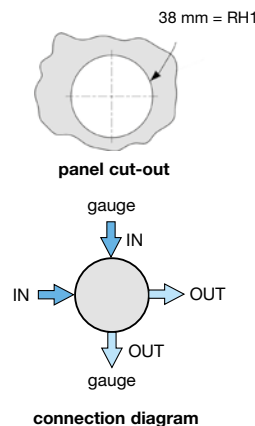
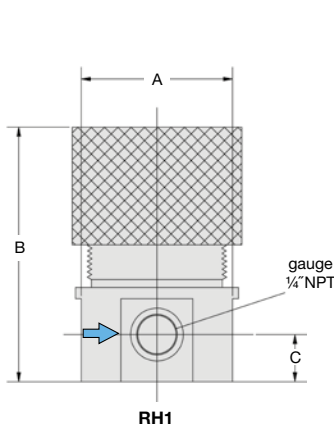


RH1



Special options, add the appropriate letter

Vespel seat		für RH1	RH1-02.X45
NBR o-ring		für RH1	RH1-02.N
FKM o-ring		für RH1	RH1-02.V
brass pressure gauge	inlet side		RH1-02.GM
SST pressure gauge	inlet side		RH1-02.G



*1 at 400 bar supply pressure and 15 bar outlet pressure
 *2 at 400 bar supply pressure and 120 bar outlet pressure

* Product group

PDF CAD
 www.aircom.net



Order example:
 RH1-02A